



Good Stabilit Solar Panel Mono Perc 9bb PV Panel 430W-540W Photovoltaic Panel/Solar Module

Our Product Introduction

for more products please visit us on manometerthermometer.com

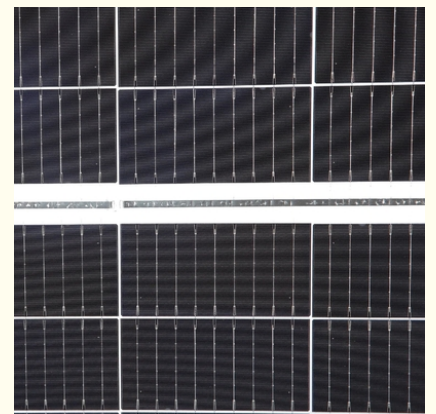
Basic Information

- Price: Email for details
- Payment Terms: Paypal\TT

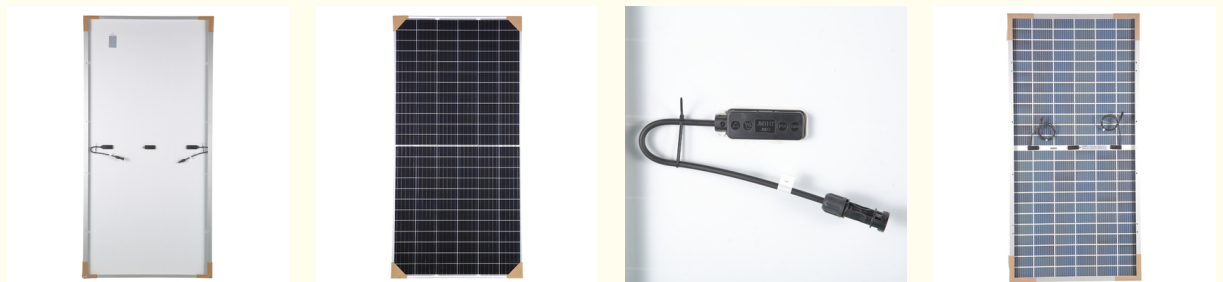


Product Specification

- Solar Panel Power: 430-540W
- J-Box: IP68
- Solar Cell: 5bb/6bb/9bb/10bb/12bb
- OEM: Acceptable
- Origin: China
- Port: Shanghai, China
- Transport Package: 31PCS/Pallet
- Warranty: 25 Years
- Number Of Cells: 144cells
- Application: Industrial
- Condition: New
- Certification: ISO, CE
- Material: Monocrystalline Silicon
- Delete Delete: Shanchu Shanchu Shanchu



More Images



Product Description

Product Description

Customer Question & Answer

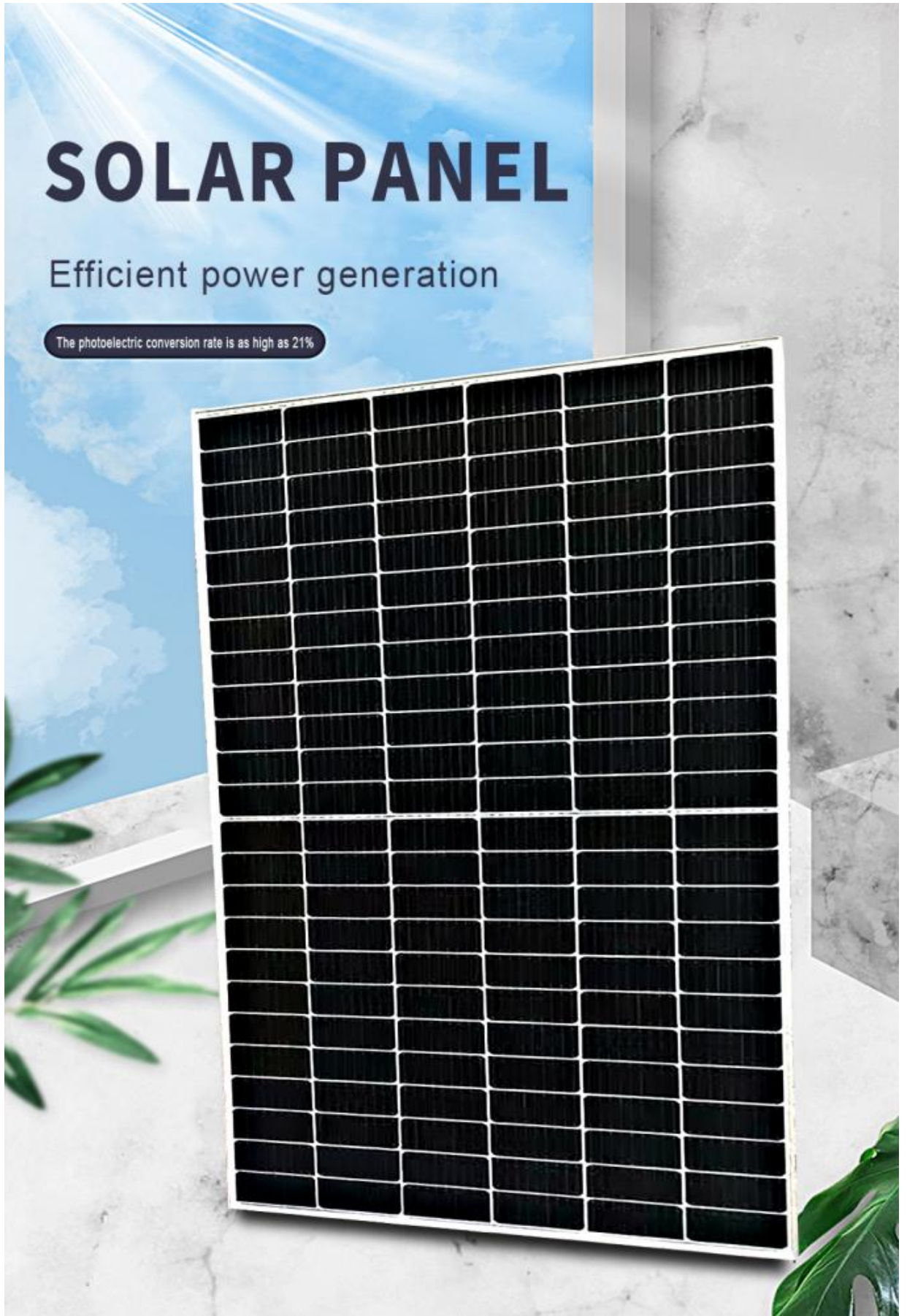
Ask something for more details

Product Description

Product Parameters

Our Product Introduction

for more products please visit us on manometerthermometer.com



Product Description

Model of Solar Panel	LY435-144M	LY440-144M	LY445-144M	LY450-144M
Peak Power Watts-Pmax(Wp)*	435	440	445	450
Maximum Power Voltage-Vmpp(V)	40.8	41	41.2	41.4
Maximum Power Current-Impp(A)	10.67	10.74	10.81	10.88
Open Circuit Voltage-Voc(V)	48.6	48.8	49	49.2
Short Circuit Current-Isc(A)	11.4	11.47	11.54	11.61
Module Efficiency (%)	19.6	19.8	20	20.2
Temperature Coefficient of Pmax		-0.36%/°C		
Temperature Coefficient of Voc		-0.26%/°C		
Temperature Coefficient of Isc		0.05%/°C		
STC	Irradiance 1000W/m2, Cell Temperature 25, Air Mass AM1.5			

Product Parameters



Product advantages
quality assurance

EIGHT ADVANTAGES MAKE A GOOD BOARD



High rate cell



High output power



High-strength bezel



Zero electricity bill



Positive A single crystal silicon



Wuzha Line Upgrade



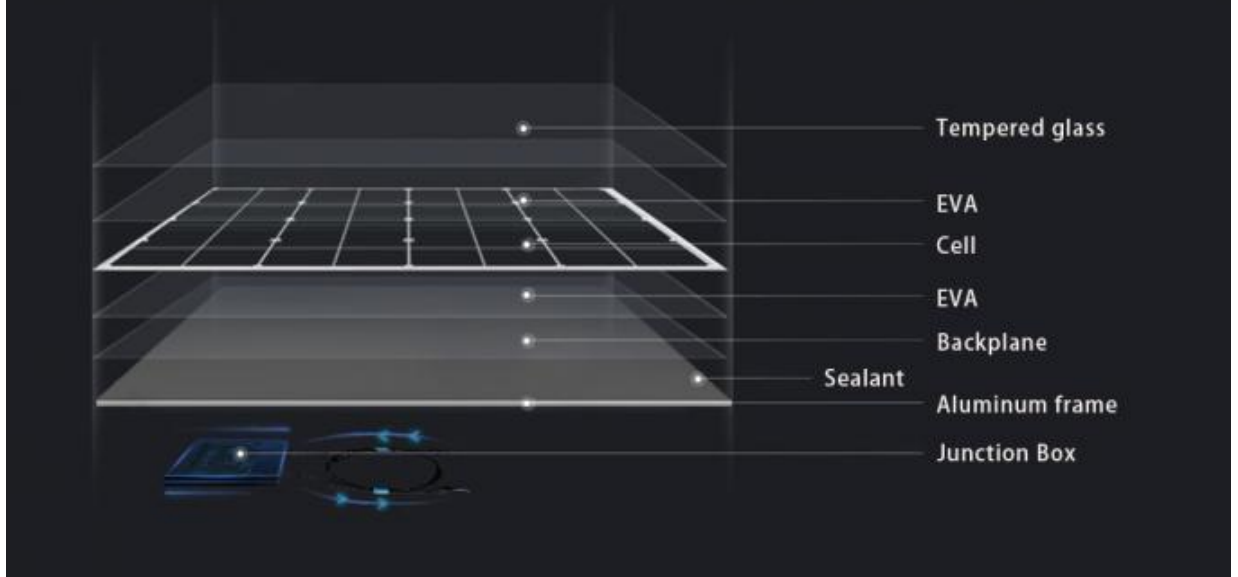
Solar New Energy



Waterproof and moisture-proof

QUALITY AS YOU CAN SEE

Decipher Solar Panel Black Technology



435-455 Watt MONO-FACIAL MODULE

P-Type

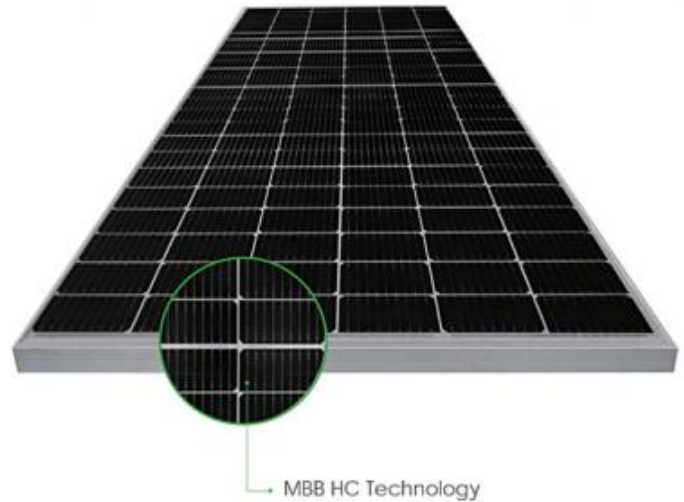
Positive power tolerance of 0~+3%

IEC61215(2016), IEC61730(2016)

ISO9001:2015: Quality Management System

ISO14001:2015: Environment Management System

ISO45001:2018
Occupational health and safety management systems



Key Features



Multi Busbar Technology

Better light trapping and current collection to improve module power output and reliability.



PID Resistance

Excellent Anti-PID performance guarantee via optimized mass-production process and materials control.



Durability Against Extreme Environmental Conditions

High salt mist and ammonia resistance.



Reduced Hot Spot Loss

Optimized electrical design and lower operating current for reduced hot spot loss and better temperature coefficient.



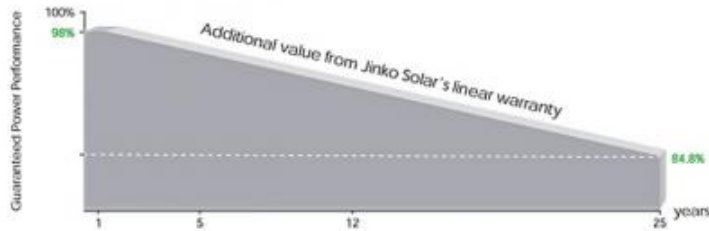
Enhanced Mechanical Load

Certified to withstand: wind load (2400 Pascal) and snow load (5400 Pascal).



POSITIVE QUALITY
Confidence Quality Assurance

LINEAR PERFORMANCE WARRANTY

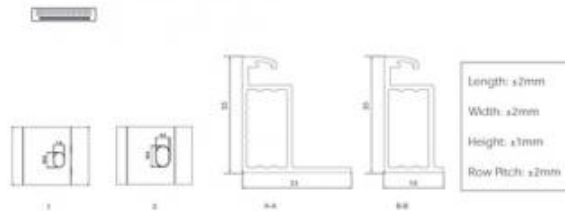
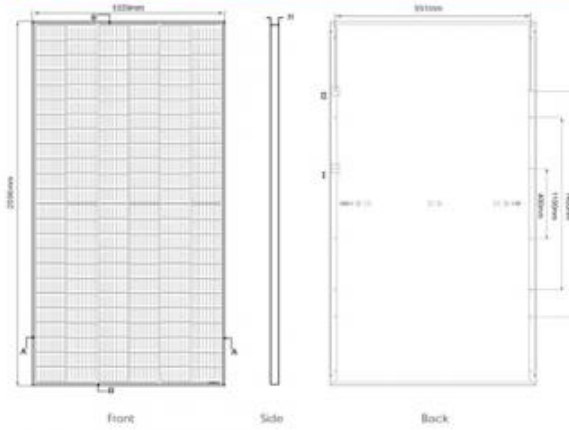


12 Year Product Warranty

25 Year Linear Power Warranty

0.55% Annual Degradation Over 25 years

Engineering Drawings



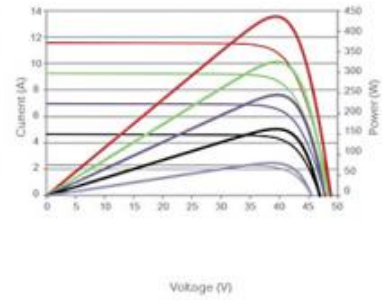
Packaging Configuration

(Two pallets = One stack)

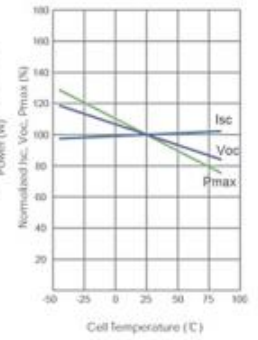
31pcs/pallets, 62pcs/stack, 682pcs/40'HQ Container

Electrical Performance & Temperature Dependence

Current-Voltage & Power-Voltage Curves (445W)



Temperature Dependence of I_{sc} , V_{oc} , P_{max}



Mechanical Characteristics

Cell Type	Mono PERC 166×166mm
No. of cells	144 (6×24)
Dimensions	2096×1039×35mm (82.52×40.91×1.38 inch)
Weight	25.1kg (55.34 lbs)
Front Glass	3.2mm, Anti-Reflection Coating, High Transmission, Low Iron, Tempered Glass
Frame	Anodized Aluminium Alloy
Junction Box	IP68 Rated
Output Cables	TUV 1×4.0mm ² (+): 290mm, (-): 145mm or Customized Length

INTELLIGENT LIGHT CONTROL

REAL DATA ACTUAL POWER



Factory direct sales



Export warranty



Quality Assurance



PRODUCT DESCRIPTION

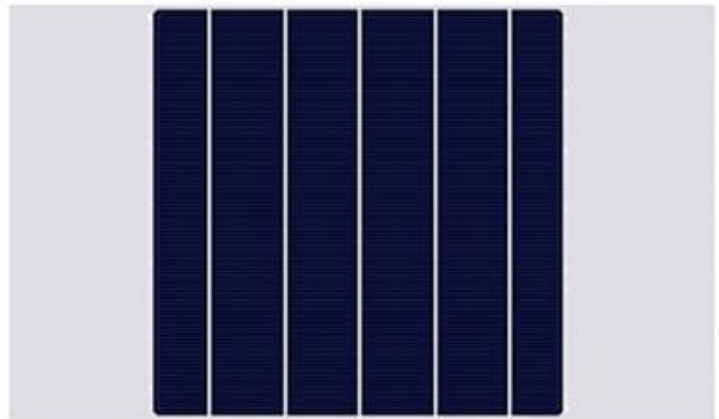


Glass

- > Antireflective glass
- > Translucency of normal luminance is increased by 2%
- > Module efficiency is increased by 2%
- > Self-cleaning function
- > Service life is as long as 25 years (30 years optional)

Solar Cell

- > High Efficiency PV Cells
- > Appearance Consistency
- > Color sorting ensure consistent appearance on each module
- > Anti-PID



Frame

- > Conventional frame
- > Silver or black frames are optional
- > Boost bearing capability and prolong service life
- > Serrated-clip design tensile strength
- > Seal-lip design glue injection

Junction box

- > Conventional standalone edition and engineering custom edition
- > Quality diode ensures module running safety
- > IP67 protection level
- > Heat dissipation
- > Long service life



WIDE RANGE OF APPLICATIONS



Home roof



Municipal Engineering



Beekeeping/fish steak



On-board/outdoor



Grazing/monitoring



Farmland irrigation

OUR CERTIFICATE





Shipping



hawk•eye China Pressure Gauge Products Directory Co.,

☎ 13299345678

✉ Raymon@canroon.com

🌐 manometerthermometer.com

No. 11 Huan Fu Road, Shang Sha Management District, Chang An Town, Dong Guan City, Guang Dong Province, China